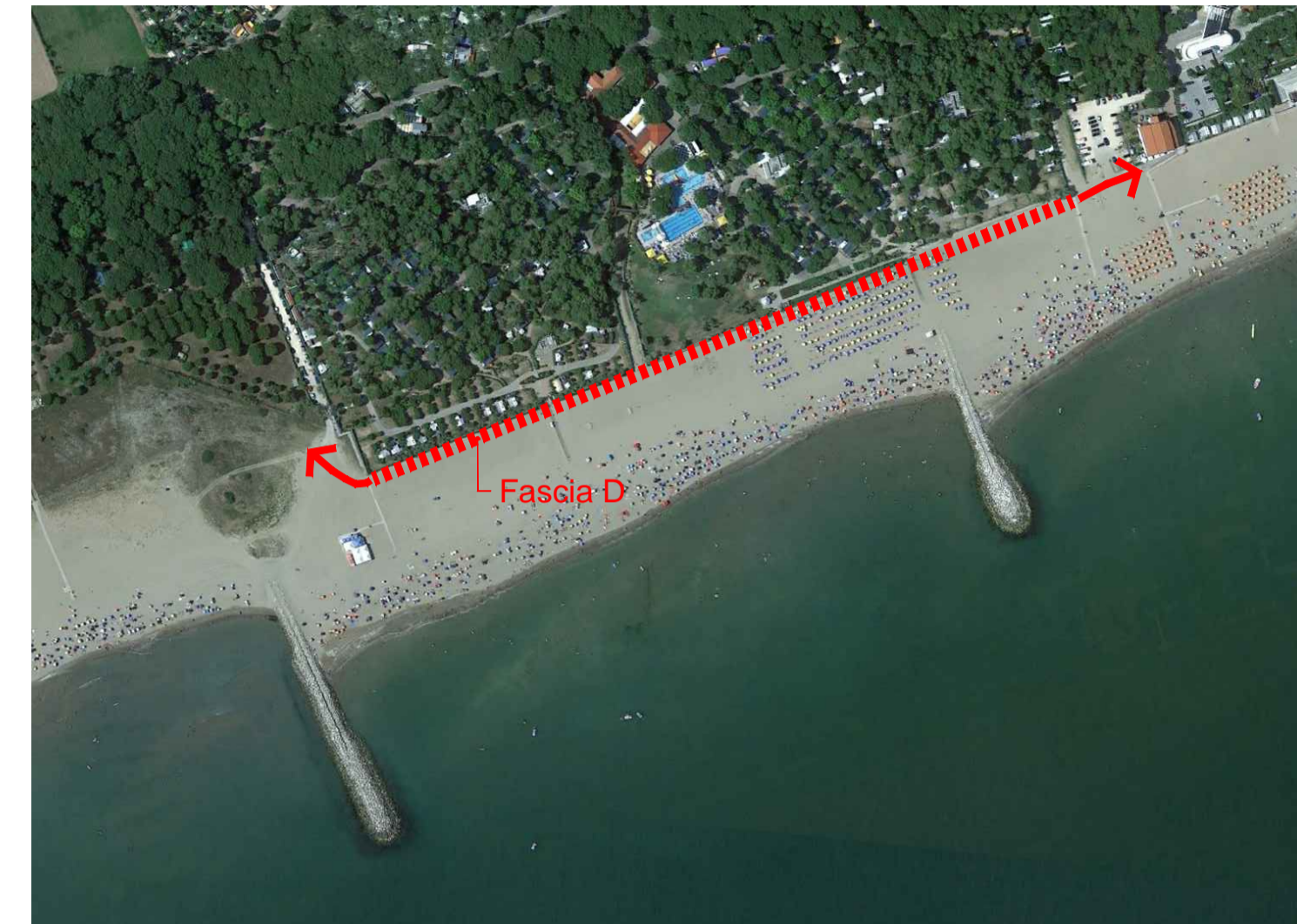
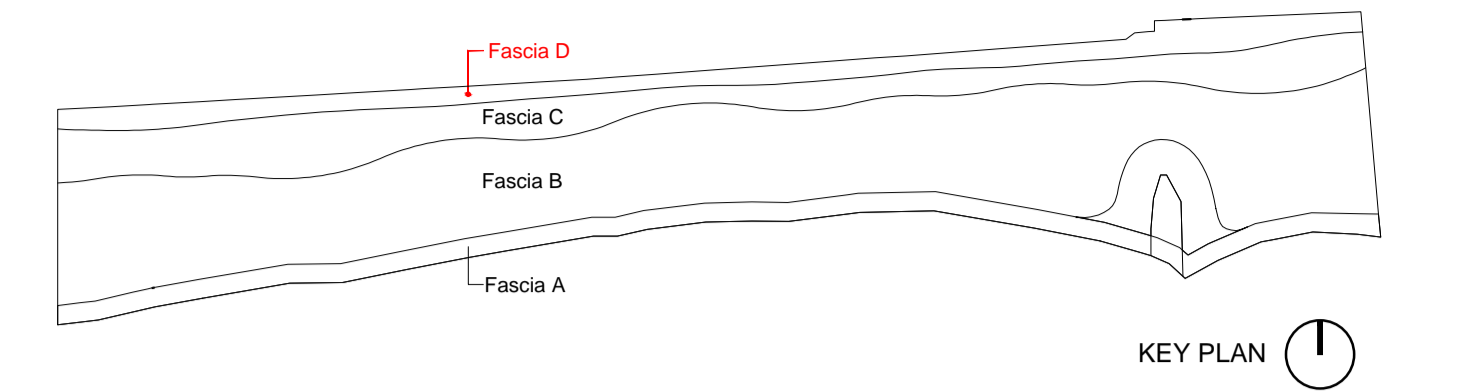
[illegible]

Diagramma di un cordone dunale con diverse specie vegetali e una scala di riferimento. Le specie indicate sono: Tamerice, Ammofila, Calcestreppola, Agropiro, e Ruchetta di mare. La scala di riferimento indica una larghezza variabile da 5,50 m a 9,00 m.

This is a detailed landscape architectural plan. The top portion of the image features a row of large, mature trees with intricate, overlapping branch structures. Below the trees is a horizontal line representing a chain-link fence. Directly in front of the fence is a row of green, bushy shrubs. Below the shrubs is a layer of brown mulch, depicted with a textured, leaf-like pattern. Underneath the mulch is a bed of colorful groundcover plants, shown in various shades of green, blue, and purple. The entire scene is set against a light-colored, stippled background representing gravel or a similar ground surface. The plan is oriented horizontally, with the trees at the top and the groundcover at the bottom.

A photograph showing a coastal dune landscape. In the foreground, there are several clumps of tall, green grass growing in the sand. The dunes recede into the background, leading to a sandy beach. In the distance, a few people can be seen walking on the beach, and the ocean is visible under a blue sky with scattered white clouds.

Situazione al terzo anno



INDIVIDUAZIONE FASCIA D SU ORTOFOTO

Sede Amministrativa
Via Vettor Pisani, 56
30013 CAVALLINO-TREPORTI (Ve)
P.IVA : 01952110276
Fax : 041/966823
TEL : 0421/5302041

**PARTICOLARI COSTRUTTIVI:
RICOSTRUZIONE CORDONE DUNOSO E ARREDO
VERDE FASCIA D**

CODICE ELABORATO

P	8	2	0	1	1	E	V	1	3	2	0	0	A	6
CODICE COMMISSA			OPERA			FASE	PROGRESSIVO			SUB		REV	ARG	DIV

[illegible]

PROTECO
engineering

PROTECO engineering s.r.l.
San Donà di Piave (VE) - 30027, Via C. Battisti, 39 - tel. +39 0421 54589 fax +39 0421 54532
www.protecoeng.com mail: protecoeng@protecoeng.com mail PEC: protecoengineering srl@legalmail.it P.I. 03952490278

FILE: P82011E32000A2.dwg